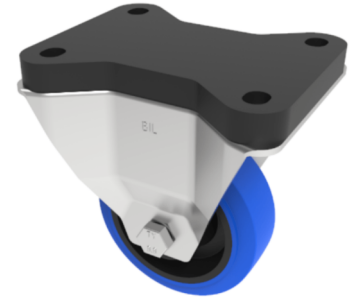


Soft Blue Rubber Fixed Plate Castor 125mm 250kg

Product code: BZEHF125SRNBFP



Pressed steel fixed castor with flat top plate fixing fitted with a blue 65 shore A elastic rubber tyre on black nylon centre wheel with roller bearing. Wheel diameter 125mm, tread width 36mm, overall height 170mm, top plate 135mm x 105mm, hole centres 105mm x 80mm Load capacity 250kg. REACH compliant also PAH-Free rubber to confirm to EU-directive 2005/69/EC

Fixing Option	Plate
Diameter (mm)	125
Load Capacity (kg)	250
Castor Type	Fixed
Height (mm)	170
Wheel Material	Rubber on Nylon
Colour / Shore Hardness	Blue Elastic Rubber on Nylon Rim / 65 Shore A
Bearing Type	Roller
Tread (mm)	36
Fork Thickness (mm)	3
Temperature Resistance	-20 °C TO +60 °C
Plate Size (mm)	135 x 105
Hole Centres (mm)	105 x 80
Top Plate Thickness (mm)	18
To Suit Fixing Bolt (mm)	10

BIL GROUP LTD

Porte Marsh Road, Calne, Wiltshire, SN11 9BW

Registered in England No: 2603821

VAT Reg: GB572705729

