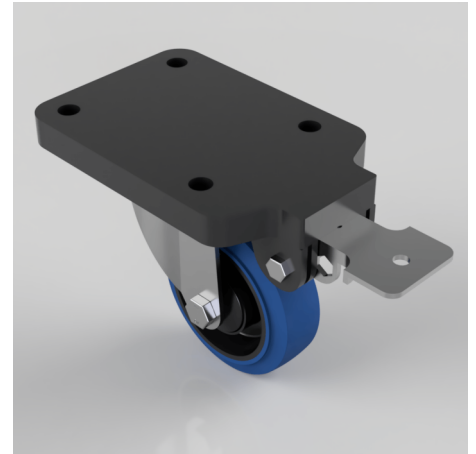


Soft Blue Rubber Swivel Brake Plate Castor 100mm 200kg

Product code: BZEH100SRNBJFPSWB

Pressed steel swivel castor with a top plate fixing fitted with a 65 shore A blue elastic rubber on nylon centred wheel with a single ball bearing and retaining caps and a fixed position total lock brake. Wheel diameter 100mm, tread width 36mm, overall height 144mm, top plate 180mm x 115mm, hole centres 105mm x 80mm, Load capacity 200kg. REACH compliant also PAH-Free rubber to confirm to EU-directive 2005/69/EC



Fixing Option	Plate
Diameter (mm)	100
Load Capacity (kg)	250
Castor Type	Swivel with Fixed Position Total Lock Brake
Height (mm)	144
Wheel Material	Rubber on Nylon
Colour / Shore Hardness	Blue Elastic Rubber on Nylon Rim / 65 Shore A
Bearing Type	Ball
Tread (mm)	36
Fork Thickness (mm)	3
Temperature Resistance	-20 °C TO +60 °C
Plate Size (mm)	180 x 115
Hole Centres (mm)	105 x 80
Swivel Radius (mm)	164
Top Plate Thickness (mm)	18
To Suit Fixing Bolt (mm)	10

BIL GROUP LTD

Porte Marsh Road, Calne, Wiltshire, SN11 9BW

Registered in England No: 2603821

VAT Reg: GB572705729

