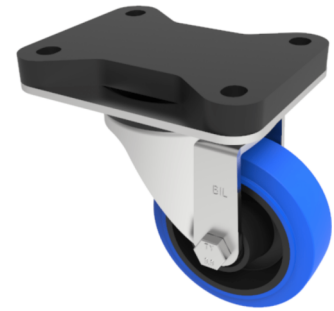


Soft Blue Rubber Swivel Plate Castor 100mm 200kg

Product code: BZEH100SRNBJFP



Pressed steel swivel castor with a top plate fixing fitted with a 65 shore A blue elastic rubber on nylon centred wheel with a single ball bearing and retaining caps. Wheel diameter 100mm, tread width 36mm, overall height 144mm, top plate 135mm x 105mm, hole centres 105mm x 80mm, Load capacity 200kg. REACH compliant also PAH-Free rubber to confirm to EU-directive 2005/69/EC

| | |
|--------------------------|---|
| Fixing Option | Plate |
| Diameter (mm) | 100 |
| Load Capacity (kg) | 250 |
| Castor Type | Swivel |
| Height (mm) | 144 |
| Wheel Material | Rubber on Nylon |
| Colour / Shore Hardness | Blue Elastic Rubber on Nylon Rim / 65 Shore A |
| Bearing Type | Ball |
| Tread (mm) | 36 |
| Fork Thickness (mm) | 3 |
| Temperature Resistance | -20 °C TO +60 °C |
| Plate Size (mm) | 135 x 105 |
| Hole Centres (mm) | 105 x 80 |
| Swivel Radius (mm) | 90 |
| Top Plate Thickness (mm) | 18 |
| To Suit Fixing Bolt (mm) | 10 |