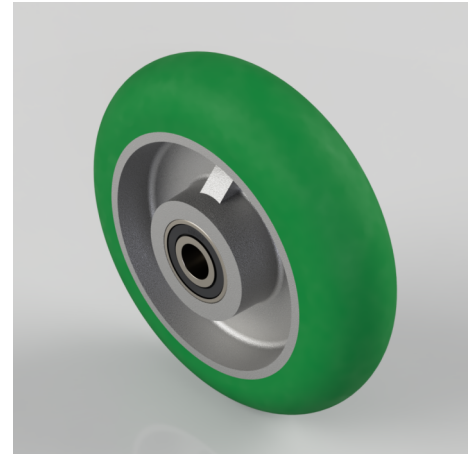


Soft Ergonomic Polyurethane 200mm Ball Bearing Wheel 775kg Load

Product code: BZH200WSRPTABJM20

200mm diameter low tractive resistance green 85 shore A ergonomic polyurethane tyred on an aluminium centred wheel with ball bearings. Tread width 50mm, bore 20mm, hub 56mm. Load capacity 775kg.



Diameter (mm)	200
Load Capacity (kg)	775
Wheel Material	Polyurethane on Aluminium
Bearing Type	Ball
Tread (mm)	50
Hub Width (mm)	56
Bore Size (mm)	20
Colour / Shore Hardness	Green Ergonomic Polyurethane on Aluminium Rim / 85 Shore A
Temperature Resistance	-20 °C TO +80 °C

BIL GROUP LTD

Porte Marsh Road, Calne, Wiltshire, SN11 9BW

Registered in England No: 2603821

VAT Reg: GB572705729

