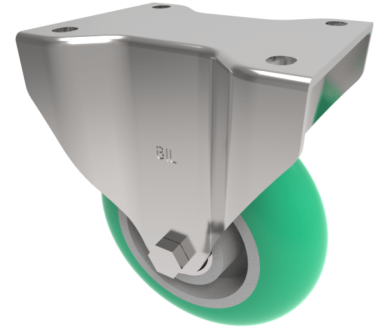


## Soft Ergonomic Polyurethane Plate Fixed Castor 125mm 450kg Load

**Product code: BZHF125SRPTABJ**

Pressed steel fixed castor with a top plate fixing fitted with a 85 shore A green ergonomic polyurethane tyred on a aluminium centred wheel with a ball bearing. Wheel diameter 125mm, tread width 50mm, overall height 156mm, top plate 105mm x 86mm, hole centres 80mm x 60mm. Load capacity 450kg.



Diameter (mm)	125
Castor Type	Fixed
Fixing Option	Plate
Height (mm)	155
Wheel Material	Polyurethane on Aluminium
Colour / Shore Hardness	Green Ergonomic Polyurethane on Aluminium Rim / 85 Shore A
Temperature Resistance	-20 °C TO +80 °C
Bearing Type	Ball
Load Capacity (kg)	450
Tread (mm)	50
Plate Size (mm)	105 x 86
Hole Centres (mm)	80 X 60
Top Plate Thickness (mm)	4
Fork Thickness (mm)	4
To Suit Fixing Bolt (mm)	8