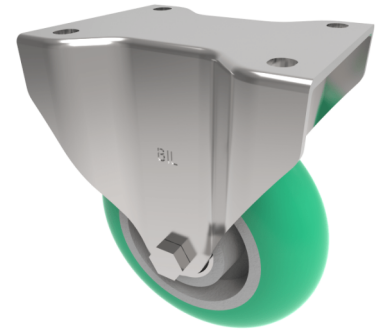


Soft Ergonomic Polyurethane Plate Fixed Castor 150mm 575kg Load

Product code: BZSPHF150SRPTABJ

Pressed steel fixed castor with a top plate fixing fitted with a green 85 shore A rounded ergonomic profile polyurethane tyre aluminium centred wheel with ball bearings. Wheel diameter 150mm, tread width 50mm, overall height 190mm, top plate 135mm x 110mm, hole centres 105mm x 80mm/75mm. Load capacity 575kg at 4kph.



Diameter (mm)	150
Castor Type	Fixed
Fixing Option	Plate
Height (mm)	190
Wheel Material	Polyurethane on Aluminium
Colour / Shore Hardness	Green Ergonomic Polyurethane on Aluminium Rim / 85 Shore A
Temperature Resistance	-20 °C TO +80 °C
Bearing Type	Ball
Load Capacity (kg)	575
Tread (mm)	50
Plate Size (mm)	135 x 110
Hole Centres (mm)	105 x 75/80
Top Plate Thickness (mm)	5
Fork Thickness (mm)	5
To Suit Fixing Bolt (mm)	10