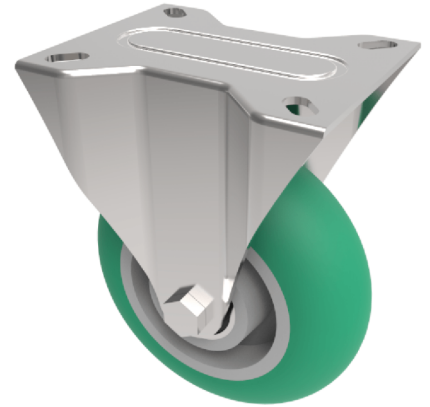


Soft Ergonomic Polyurethane Plate Fixed Castor 150mm 575kg Load

Product code: BZPF150SRPTABJ

Pressed steel fixed castor with a top plate fixing fitted with a Ergonomic round polyurethane tyred aluminium centred wheel with ball bearings. Wheel diameter 150mm, tread width 50mm, overall height 194mm, plate size 135mm x 110mm, hole centres 105mm x 80mm. Load capacity 575kg.



Diameter (mm)	150
Castor Type	Fixed
Fixing Option	Plate
Height (mm)	194
Wheel Material	Polyurethane on Aluminium
Colour / Shore Hardness	Green Ergonomic Polyurethane on Aluminium Rim / 85 Shore A
Temperature Resistance	-20 °C TO +80 °C
Bearing Type	Ball
Load Capacity (kg)	575
Tread (mm)	50
Plate Size (mm)	135 x 110
Hole Centres (mm)	105 x 80
Top Plate Thickness (mm)	6
Fork Thickness (mm)	4
To Suit Fixing Bolt (mm)	12

BIL GROUP LTD

Porte Marsh Road, Calne, Wiltshire, SN11 9BW

Registered in England No: 2603821

VAT Reg: GB572705729

