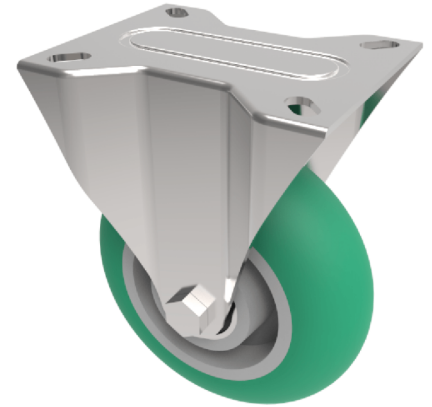


Soft Ergonomic Polyurethane Plate Fixed Castor 200mm 500kg Load

Product code: BZPHF200SRPTABJ

Pressed steel fixed castor with a top plate fixing fitted with a round Green ergonomic polyurethane tyred aluminium centred wheel with ball bearings. Wheel diameter 200, tread width 50mm, overall height 238mm, plate size 135mm x 110mm, hole centres 105mm x 80mm/75mm. Load capacity 500kg.



Diameter (mm)	200
Castor Type	Fixed
Fixing Option	Plate
Height (mm)	238
Wheel Material	Polyurethane on Aluminium
Colour / Shore Hardness	Green Ergonomic Polyurethane on Aluminium Rim / 85 Shore A
Temperature Resistance	-20 °C TO +80 °C
Bearing Type	Ball
Load Capacity (kg)	500
Tread (mm)	50
Plate Size (mm)	135 x 115
Hole Centres (mm)	105 x 80/75
Top Plate Thickness (mm)	4
Fork Thickness (mm)	4
To Suit Fixing Bolt (mm)	10