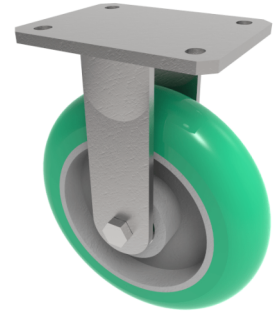


Soft Ergonomic Polyurethane Plate Fixed Castor 200mm 600kg Load

Product code: BZMJF200SRPTABJ

Fabricated white zinc ROHS plated fixed castor with top plate fixing fitted with a 200mm x 50mm 85 shore A ergonomic green polyurethane tyred aluminium centred wheel with ball bearings overall height 240mm, plate size 138mm x 110mm, hole centres 105mm x 80/75mm. Load capacity 600kg



Diameter (mm)	200
Fixing Option	Plate
Castor Type	Fixed
Bearing Type	Ball
Height (mm)	241
Plate Size (mm)	138 x 110
Hole Centres (mm)	105 x 80/75
To Suit Fixing Bolt (mm)	10
Wheel Material	Polyurethane on Aluminium
Colour / Shore Hardness	Green Ergonomic Polyurethane on Aluminium Rim / 85 Shore A
Temperature Resistance	-20 °C TO +80 °C
Top Plate Thickness (mm)	7
Fork Thickness (mm)	6
Load Capacity (kg)	700
Tread (mm)	50