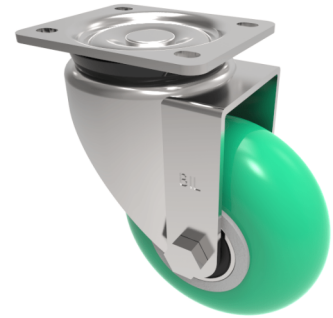


## Soft Ergonomic Polyurethane Plate Swivel Castor Brake 100mm 350kg Load

**Product code: BZXP100SRPTABJSWB**



Pressed steel swivel castor with a top plate fixing fitted with a green ergonomic 85 shore A polyurethane round profile wheel with aluminium centre with ball bearings and total lock brake. Wheel diameter 100mm, tread width 50mm, overall height 140mm, plate size 105 mm x 86mm, hole centres 80/77mm x 60mm Load capacity 350kg.

Diameter (mm)	100
Castor Type	Swivel with Total Lock Brake
Fixing Option	Plate
Height (mm)	140
Wheel Material	Polyurethane on Aluminium
Colour / Shore Hardness	Green Ergonomic Polyurethane on Aluminium Rim / 85 Shore A
Temperature Resistance	-20 °C TO +80 °C
Bearing Type	Ball
Load Capacity (kg)	350
Tread (mm)	50
Swivel Radius (mm)	135
Plate Size (mm)	105 x 86
Hole Centres (mm)	80 / 77 X 60
Top Plate Thickness (mm)	6
Fork Thickness (mm)	5
To Suit Fixing Bolt (mm)	8