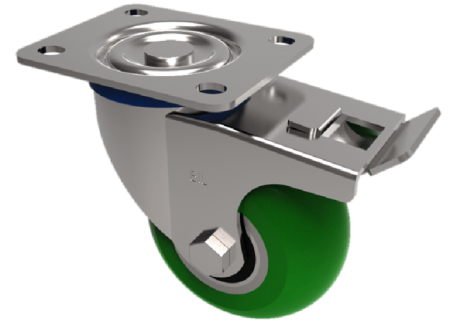


## Soft Ergonomic Polyurethane Plate Swivel Castor Brake 100mm 350kg Load

**Product code: BZH100SRPTABJSWB**



Pressed steel swivel castor with a flat top plate fixing fitted with a green 85 shore A ergonomic polyurethane tyred aluminium centered wheel with ball bearing and total lock brake. Wheel diameter 100mm, tread width 50mm, overall height 128mm, plate size 105mm x 86mm, hole centres 80mm x 60mm. Load capacity 350kg.

Diameter (mm)	100
Castor Type	Swivel with Total Lock Brake
Fixing Option	Plate
Height (mm)	128
Wheel Material	Polyurethane on Aluminium
Colour / Shore Hardness	Green Ergonomic Polyurethane on Aluminium Rim / 85 Shore A
Temperature Resistance	-20 °C TO +80 °C
Bearing Type	Ball
Load Capacity (kg)	350
Tread (mm)	50
Swivel Radius (mm)	120
Plate Size (mm)	105 x 86
Hole Centres (mm)	80 X 60
Top Plate Thickness (mm)	4
Fork Thickness (mm)	4
To Suit Fixing Bolt (mm)	8

### BIL GROUP LTD

Porte Marsh Road, Calne, Wiltshire, SN11 9BW

Registered in England No: 2603821

VAT Reg: GB572705729

