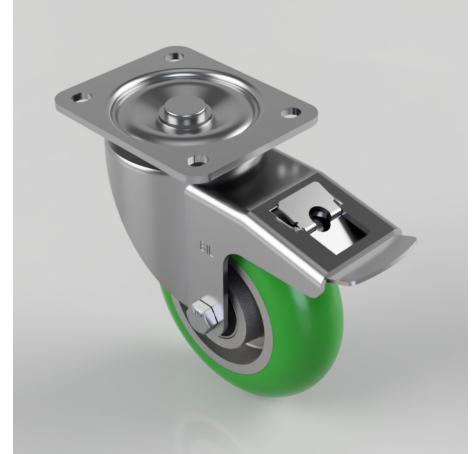


Soft Ergonomic Polyurethane Plate Swivel Castor Brake 150mm 575kg Load

Product code: BZSPH150SRPTABJSWB

Pressed steel swivel castor with a top plate fixing fitted with a green 85 shore A rounded ergonomic profile polyurethane tyre aluminium centred wheel with ball bearings and total lock brake. Wheel diameter 150mm, tread width 50mm, overall height 190mm, top plate 135mm x 110mm, hole centres 105mm x 80/75mm. Load capacity 575kg at 4kph.



Diameter (mm)	150
Castor Type	Swivel with Total Lock Brake
Fixing Option	Plate
Height (mm)	190
Wheel Material	Polyurethane on Aluminium
Colour / Shore Hardness	Green Ergonomic Polyurethane on Aluminium Rim / 85 Shore A
Temperature Resistance	-20 °C TO +80 °C
Bearing Type	Ball
Load Capacity (kg)	575
Tread (mm)	50
Swivel Radius (mm)	167
Plate Size (mm)	135 x 110
Hole Centres (mm)	105 x 80/75
Top Plate Thickness (mm)	5
Fork Thickness (mm)	4
To Suit Fixing Bolt (mm)	10

BIL GROUP LTD

Porte Marsh Road, Calne, Wiltshire, SN11 9BW

Registered in England No: 2603821

VAT Reg: GB572705729

