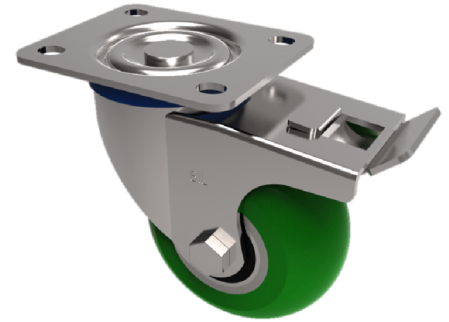


Soft Ergonomic Polyurethane Plate Swivel Castor Brake 200mm 350kg Load

Product code: BZMM200SRPTABJSWB



Pressed steel swivel castor with a top plate fixing fitted with a green ergonomic 85shoreA polyurethane wheel on a aluminium centred wheel with ball bearings. Wheel diameter 200mm, tread width 50mm, overall height 235mm, top plate 135mm x 110mm, hole centres 105mm x 80/75mm. Load capacity 350kg.

Diameter (mm)	200
Castor Type	Swivel with Total Lock Brake
Fixing Option	Plate
Height (mm)	235
Wheel Material	Polyurethane on Aluminium
Colour / Shore Hardness	Green Ergonomic Polyurethane on Aluminium Rim / 85 Shore A
Temperature Resistance	-20 °C TO +80 °C
Bearing Type	Ball
Load Capacity (kg)	350
Tread (mm)	50
Swivel Radius (mm)	167
Plate Size (mm)	135 x 110
Hole Centres (mm)	105 x 80
Top Plate Thickness (mm)	3
Fork Thickness (mm)	3
To Suit Fixing Bolt (mm)	10