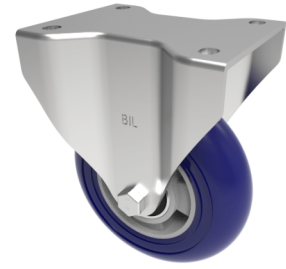


## Soft Ergonomic Speed Polyurethane Plate Fixed Castor 150mm 500kg Load

**Product code: BZSPHF150RSPABJ**



Pressed steel fixed castor with a top plate fixing fitted with a ergonomic blue 75 shore A polyurethane tyre on aluminium centred wheel with ball bearings. Wheel diameter 150mm, tread width 50mm, overall height 190mm, top plate 135mm x 110mm, hole centres 105mm x 80mm/75mm. Load capacity 500kg at 4kph and 190kg at 16kph **\*\*FOR INTERNAL TOWING ONLY\*\***

Diameter (mm)	150
Castor Type	Fixed
Fixing Option	Plate
Height (mm)	190
Wheel Material	Polyurethane on Aluminium
Colour / Shore Hardness	Blue Ergonomic Polyurethane on Aluminium Rim / 75 Shore A
Temperature Resistance	-20 °C TO +70 °C
Bearing Type	Ball
Load Capacity (kg)	500
Tread (mm)	50
Plate Size (mm)	135 x 110
Hole Centres (mm)	105 x 75/80
Top Plate Thickness (mm)	5
Fork Thickness (mm)	5
To Suit Fixing Bolt (mm)	10

### BIL GROUP LTD

Porte Marsh Road, Calne, Wiltshire, SN11 9BW

Registered in England No: 2603821

VAT Reg: GB572705729

