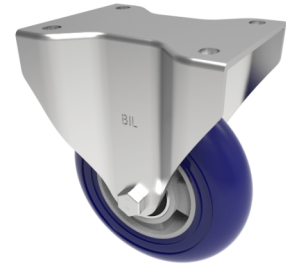


## Soft Ergonomic Speed Polyurethane Plate Fixed Castor 160mm 550kg Load

**Product code: BZXPF160RSPABJ**



Pressed steel fixed castor with a top plate fixing fitted with a blue 75 shore A polyurethane tyre on aluminium centred wheel with ball bearings. Wheel diameter 160mm, tread width 50mm, overall height 205mm, top plate 135mm x 110mm, hole centres 105mm x 80mm/75mm. Load capacity 550kg at 4kph and 220kg at 16kph **\*\*FOR INTERNAL TOWING ONLY\*\***

Diameter (mm)	160
Height (mm)	205
Fixing Option	Plate
Castor Type	Fixed
Bearing Type	Ball
Plate Size (mm)	135 x 110
Hole Centres (mm)	105 x 75/80
Wheel Material	Polyurethane on Aluminium
Colour / Shore Hardness	Blue Ergonomic Polyurethane on Aluminium Rim / 75 Shore A
Tread (mm)	50
Load Capacity (kg)	550
Top Plate Thickness (mm)	6
Fork Thickness (mm)	5
To Suit Fixing Bolt (mm)	10
Temperature Resistance	-20 °C TO +70 °C

### BIL GROUP LTD

Porte Marsh Road, Calne, Wiltshire, SN11 9BW

Registered in England No: 2603821

VAT Reg: GB572705729

