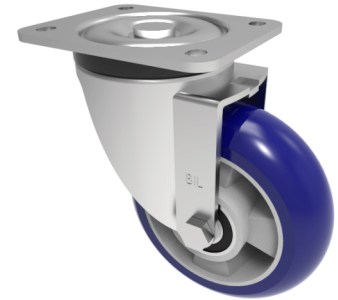


## Soft Ergonomic Speed Polyurethane Plate Swivel Castor 150mm 500kg Load

**Product code: BZXP150RSPABJLP**



Pressed steel swivel castor with a top plate fixing fitted with a 75 shore A Blue Ergonomic polyurethane tyre on aluminium centred wheel with ball bearings. Wheel diameter 150mm, tread width 50mm, overall height 200mm, top plate 175mm x 140mm, hole centres 140mm x 105mm. Load capacity 500kg at 4kph and 200kg at 16kph **\*\*FOR INTERNAL TOWING ONLY\*\***

Diameter (mm)	150
Height (mm)	200
Fixing Option	Plate
Castor Type	Swivel
Swivel Radius (mm)	128
Bearing Type	Ball
Plate Size (mm)	162 X 140
Hole Centres (mm)	140 X 105
Wheel Material	Polyurethane on Aluminium
Colour / Shore Hardness	Blue Ergonomic Polyurethane on Aluminium Rim / 75 Shore A
Tread (mm)	50
Load Capacity (kg)	500
Top Plate Thickness (mm)	6
Fork Thickness (mm)	5
To Suit Fixing Bolt (mm)	10
Temperature Resistance	-20 °C TO +70 °C

### BIL GROUP LTD

Porte Marsh Road, Calne, Wiltshire, SN11 9BW

Registered in England No: 2603821

VAT Reg: GB572705729

