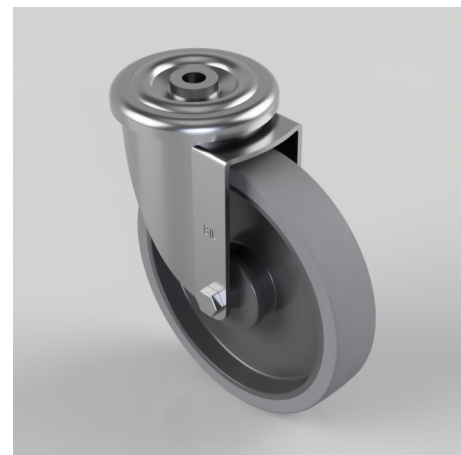


Soft Grey Rubber Bolt Hole Swivel Castor 200mm 220kg Load

Product code: BZMM200STPRBJBH16

Pressed steel swivel castor with 16mm bolt hole fitted with a 65 shore A grey thermoplastic rubber tyre on grey polypropylene centre wheel with single ball bearing with retaining caps. Wheel diameter 200mm, tread width 40mm, overall height 238mm, Load capacity 220kg. REACH compliant also PAH-Free rubber to confirm to EU-directive 2005/69/EC



Diameter (mm)	200
Castor Type	Swivel
Fixing Option	Bolt Hole
Height (mm)	238
Wheel Material	Rubber on Polypropylene
Colour / Shore Hardness	Grey Elastic Rubber on Polypropylene Rim / 65 Shore A
Temperature Resistance	-20 °C TO +60 °C
Bearing Type	Ball
Load Capacity (kg)	220
Tread (mm)	40
Swivel Radius (mm)	153
Head Dia (mm)	114
Fork Thickness (mm)	4
To Suit Fixing Bolt (mm)	16

BIL GROUP LTD

Porte Marsh Road, Calne, Wiltshire, SN11 9BW

Registered in England No: 2603821

VAT Reg: GB572705729

