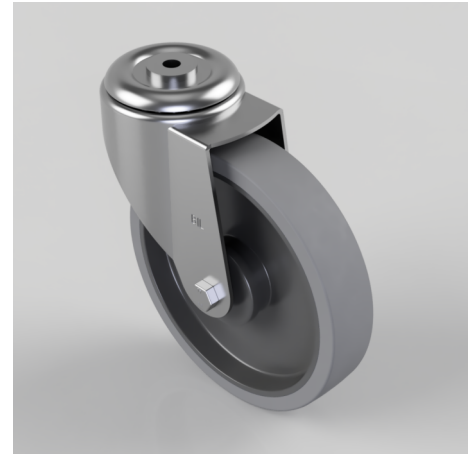


Soft Grey Rubber Bolt Hole Swivel Castor 200mm 220kg Load

Product code: BZMM200STPRBJBH12

Pressed steel swivel castor with 12mm bolt hole fitted with a 65 shore A grey thermoplastic rubber tyre on grey polypropylene centre wheel with single ball bearing with retaining caps. Wheel diameter 200mm, tread width 40mm, overall height 235mm, Load capacity 220kg. REACH compliant also PAH-Free rubber to confirm to EU-directive 2005/69/EC



| | |
|--------------------------|---|
| Diameter (mm) | 200 |
| Castor Type | Swivel |
| Fixing Option | Bolt Hole |
| Height (mm) | 235 |
| Wheel Material | Rubber on Polypropylene |
| Colour / Shore Hardness | Grey Elastic Rubber on Polypropylene Rim / 65 Shore A |
| Temperature Resistance | -20 °C TO +60 °C |
| Bearing Type | Ball |
| Load Capacity (kg) | 220 |
| Tread (mm) | 40 |
| Swivel Radius (mm) | 168 |
| Head Dia (mm) | 90 |
| Fork Thickness (mm) | 3 |
| To Suit Fixing Bolt (mm) | 12 |