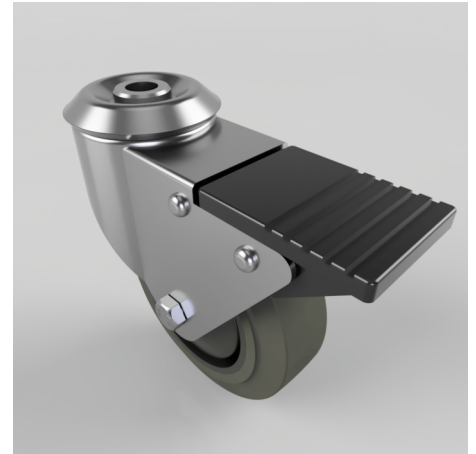


Soft Grey Rubber Bolt Hole Swivel Castor Brake 100mm 100kg Load

Product code: BZBC100STPRBJBH12SWB

Pressed steel swivel castor with a 12mm bolt hole fitted with a grey thermoplastic rubber tyre on black polypropylene centred wheel with a ball bearing, thread guards and a total lock brake. Wheel diameter 100mm, tread width 32mm, overall height 126mm, Load capacity 100kg. REACH compliant also PAH-Free rubber to confirm to EU-directive 2005/69/EC



Diameter (mm)	100
Fixing Option	Bolt Hole
Castor Type	Swivel with Total Lock Brake
Head Dia (mm)	60
Height (mm)	126
Bearing Type	Ball
Swivel Radius (mm)	115
Wheel Material	Rubber on Polypropylene
Colour / Shore Hardness	Grey Elastic Rubber on Polypropylene Rim / 65 Shore A
Fork Thickness (mm)	2
Temperature Resistance	-20 °C TO +60 °C
To Suit Fixing Bolt (mm)	12
Tread (mm)	32
Load Capacity (kg)	100