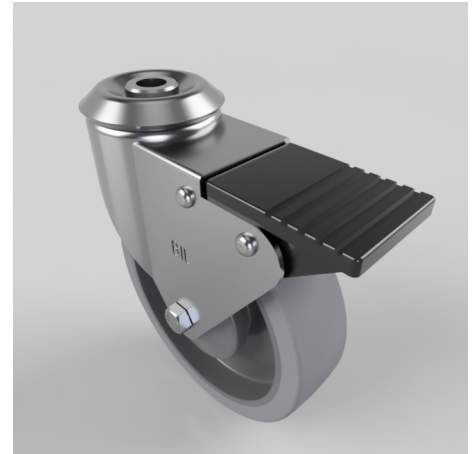


Soft Grey Rubber Bolt Hole Swivel Castor Brake 125mm 120kg Load

Product code: BZBC125STPRBJBH12SWB

Pressed steel swivel castor with a 12mm bolt hole fixing fitted with a grey 65 shore A thermoplastic rubber tyre on a black polypropylene centred wheel with a ball bearing and swivel wheel brake. Wheel diameter 125mm, tread width 32mm, overall height 154mm, Load capacity 120kg. REACH compliant also PAH-Free rubber to confirm to EU-directive 2005/69/EC



Diameter (mm)	125
Fixing Option	Bolt Hole
Castor Type	Swivel with Total Lock Brake
Head Dia (mm)	60
Height (mm)	154
Bearing Type	Ball
Swivel Radius (mm)	115
Wheel Material	Rubber on Polypropylene
Colour / Shore Hardness	Grey Elastic Rubber on Polypropylene Rim / 65 Shore A
Fork Thickness (mm)	2
Temperature Resistance	-20 °C TO +60 °C
To Suit Fixing Bolt (mm)	12
Tread (mm)	32
Load Capacity (kg)	120