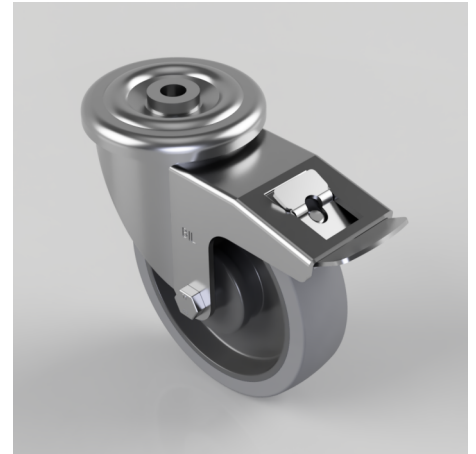


Soft Grey Rubber Bolt Hole Swivel Castor Brake 160mm 200kg Load

Product code: BZMM160STPRBJBH16SWB

Pressed steel swivel castor with a 16 mm bolt hole fitted with a 65 shore A grey thermoplastic rubber tyre on grey polypropylene centre wheel with single ball bearing with retaining caps and a total lock brake. Wheel diameter 160mm, tread width 40mm, overall height 193mm, Load capacity 200kg. REACH compliant also PAH-Free rubber to confirm to EU-directive 2005/69/EC



Diameter (mm)	160
Castor Type	Swivel with Total Lock Brake
Fixing Option	Bolt Hole
Height (mm)	193
Wheel Material	Rubber on Polypropylene
Colour / Shore Hardness	Grey Elastic Rubber on Polypropylene Rim / 65 Shore A
Temperature Resistance	-20 °C TO +60 °C
Bearing Type	Ball
Load Capacity (kg)	200
Tread (mm)	40
Swivel Radius (mm)	168
Head Dia (mm)	114
Fork Thickness (mm)	4
To Suit Fixing Bolt (mm)	16

BIL GROUP LTD

Porte Marsh Road, Calne, Wiltshire, SN11 9BW

Registered in England No: 2603821

VAT Reg: GB572705729

