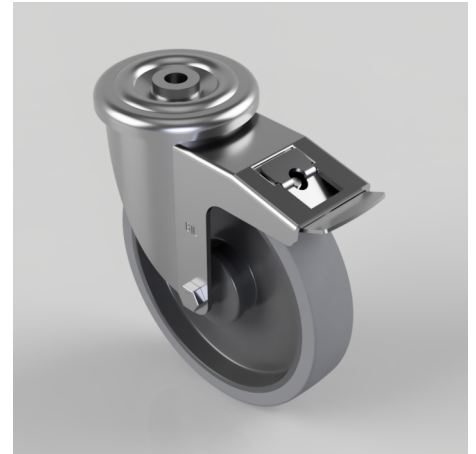


## Soft Grey Rubber Bolt Hole Swivel Castor Brake 200mm 220kg Load

**Product code: BZMM200STPRBJBH16SWB**

Pressed steel swivel castor with 16mm bolt hole fitted with a 65 shore A grey thermoplastic rubber tyre on grey polypropylene centre wheel with single ball bearing with retaining caps and total lock brake. Wheel diameter 200mm, tread width 40mm, overall height 238mm, Load capacity 220kg. REACH compliant also PAH-Free rubber to confirm to EU-directive 2005/69/EC



Diameter (mm)	200
Castor Type	Swivel with Total Lock Brake
Fixing Option	Bolt Hole
Height (mm)	238
Wheel Material	Rubber on Polypropylene
Colour / Shore Hardness	Grey Elastic Rubber on Polypropylene Rim / 65 Shore A
Temperature Resistance	-20 °C TO +60 °C
Bearing Type	Ball
Load Capacity (kg)	220
Tread (mm)	40
Swivel Radius (mm)	167
Head Dia (mm)	114
Fork Thickness (mm)	4
To Suit Fixing Bolt (mm)	16

### BIL GROUP LTD

Porte Marsh Road, Calne, Wiltshire, SN11 9BW

Registered in England No: 2603821

VAT Reg: GB572705729

