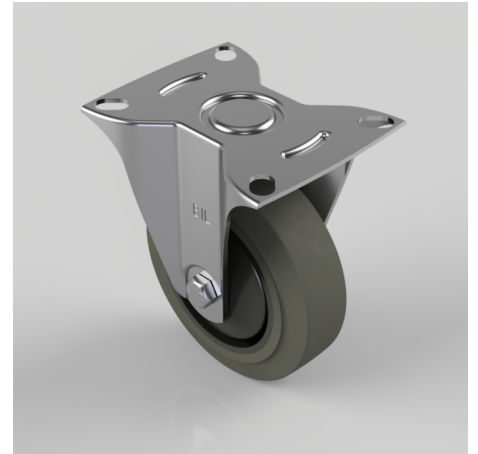


## Soft Grey Rubber Plate Fixed Castor 100mm 100kg Load

**Product code: BZBCF100STPRBJ**

Pressed steel fixed castor with top plate fixing fitted with a grey thermoplastic rubber tyre on black polypropylene centred wheel with a ball bearing. Wheel diameter 100mm, tread width 32mm, overall height 126mm, plate size 102mm x 84mm, hole centres 80mm x 60mm. Load capacity 100kg. REACH compliant also PAH-Free rubber to confirm to EU-directive 2005/69/EC



Diameter (mm)	100
Fixing Option	Plate
Castor Type	Fixed
Plate Size (mm)	102 x 84
Hole Centres (mm)	80 X 60
Height (mm)	126
Bearing Type	Ball
Wheel Material	Rubber on Polypropylene
Colour / Shore Hardness	Grey Elastic Rubber on Polypropylene Rim / 65 Shore A
Top Plate Thickness (mm)	2
Fork Thickness (mm)	2
Temperature Resistance	-20 °C TO +60 °C
To Suit Fixing Bolt (mm)	8
Tread (mm)	32
Load Capacity (kg)	100

### BIL GROUP LTD

Porte Marsh Road, Calne, Wiltshire, SN11 9BW

Registered in England No: 2603821

VAT Reg: GB572705729

