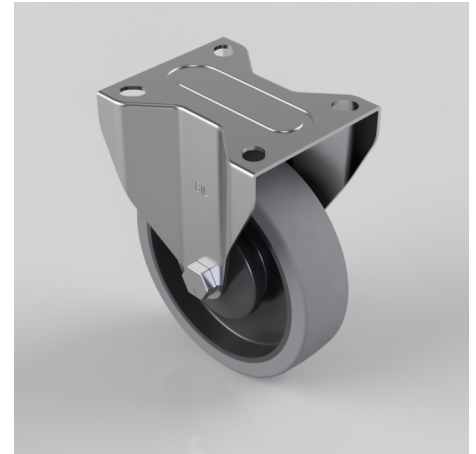


## Soft Grey Rubber Plate Fixed Castor 125mm 120kg Load

**Product code: BZMMF125STPRBJ**

Pressed steel fixed castor with top plate fixing fitted with a 65 shore A grey thermoplastic rubber tyre on grey polypropylene centre wheel with single ball bearing with retaining caps. Wheel diameter 125mm, tread width 32mm, overall height 155mm, top plate 105mm x 85mm, hole centres 80mm x 60mm. Load capacity 120kg. REACH compliant also PAH-Free rubber to confirm to EU-directive 2005/69/EC



Diameter (mm)	125
Castor Type	Fixed
Fixing Option	Plate
Height (mm)	155
Wheel Material	Rubber on Polypropylene
Colour / Shore Hardness	Grey Elastic Rubber on Polypropylene Rim / 65 Shore A
Temperature Resistance	-20 °C TO +60 °C
Bearing Type	Ball
Load Capacity (kg)	120
Tread (mm)	32
Plate Size (mm)	105 X 85
Hole Centres (mm)	80 X 60
Top Plate Thickness (mm)	2
Fork Thickness (mm)	2
To Suit Fixing Bolt (mm)	8