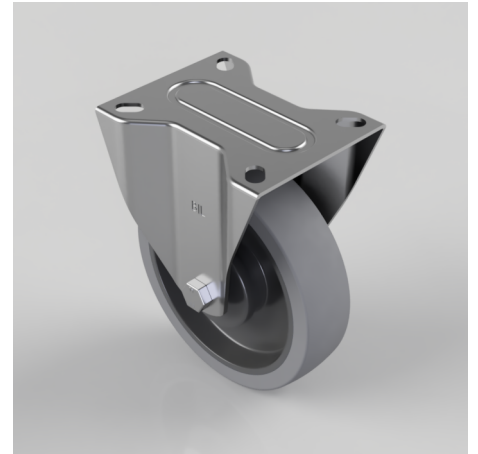


## Soft Grey Rubber Plate Fixed Castor 160mm 200kg Load

**Product code: BZMMF160STPRBJ**

Pressed steel fixed castor with top plate fixing fitted with a 65 shore A grey thermoplastic rubber tyre on grey polypropylene centre wheel with single ball bearing with retaining caps. Wheel diameter 160mm, tread width 40mm, overall height 195mm, top plate 135mm x 110mm, hole centres 105mm x 80mm. Load capacity 200kg. REACH compliant also PAH-Free rubber to confirm to EU-directive 2005/69/EC



|                          |   |
|--------------------------|---|
| Diameter (mm)            | 160   |
| Castor Type              | Fixed   |
| Fixing Option            | Plate   |
| Height (mm)              | 195   |
| Wheel Material           | Rubber on Polypropylene                               |
| Colour / Shore Hardness  | Grey Elastic Rubber on Polypropylene Rim / 65 Shore A |
| Temperature Resistance   | -20 °C TO +60 °C                                      |
| Bearing Type             | Ball  |
| Load Capacity (kg)       | 200   |
| Tread (mm)               | 40  |
| Plate Size (mm)          | 135 x 110   |
| Hole Centres (mm)        | 105 x 80  |
| Top Plate Thickness (mm) | 2.5   |
| Fork Thickness (mm)      | 2.5   |
| To Suit Fixing Bolt (mm) | 10  |

### BIL GROUP LTD

Porte Marsh Road, Calne, Wiltshire, SN11 9BW

Registered in England No: 2603821

VAT Reg: GB572705729

