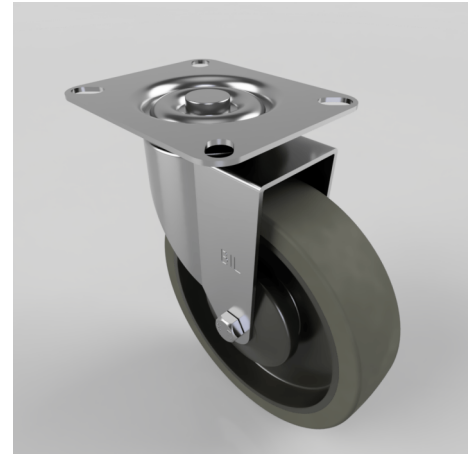


Soft Grey Rubber Plate Swivel Castor 125mm 120kg Load

Product code: BZBC125STPRBJ

Pressed steel swivel castor with a top plate fixing fitted with a grey 65 shore A thermoplastic rubber tyre on a black polypropylene centred wheel with a ball bearing. Wheel diameter 125mm, tread width 32mm, overall height 154mm, plate size 102mm x 84mm, hole centres 80mm x 60mm. Load capacity 120kg. REACH compliant also PAH-Free rubber to confirm to EU-directive 2005/69/EC



Diameter (mm)	125
Fixing Option	Plate
Castor Type	Swivel
Plate Size (mm)	102 x 84
Hole Centres (mm)	80 X 60
Height (mm)	154
Bearing Type	Ball
Swivel Radius (mm)	100
Wheel Material	Rubber on Polypropylene
Colour / Shore Hardness	Grey Elastic Rubber on Polypropylene Rim / 65 Shore A
Top Plate Thickness (mm)	2
Fork Thickness (mm)	2
Temperature Resistance	-20 °C TO +60 °C
To Suit Fixing Bolt (mm)	8
Tread (mm)	32
Load Capacity (kg)	120

BIL GROUP LTD

Porte Marsh Road, Calne, Wiltshire, SN11 9BW

Registered in England No: 2603821

VAT Reg: GB572705729

