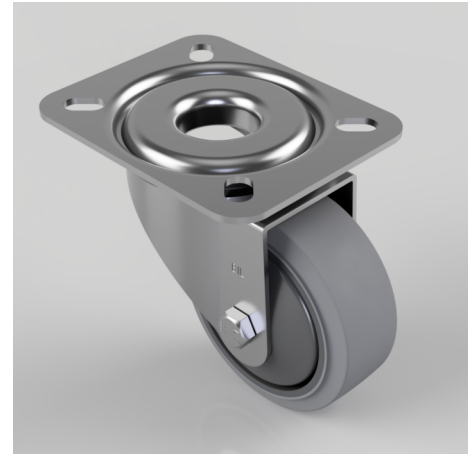


## Soft Grey Rubber Plate Swivel Castor 80mm 90kg Load

**Product code: BZRMM80STPRBJ**

Pressed steel swivel castor with top plate fixing fitted with a 65 shore A grey thermoplastic rubber tyre on grey polypropylene centre wheel with ball bearing. Wheel diameter 80mm, tread width 32mm, overall height 100mm, top plate 105mm x 85mm, hole centres 80mm x 60mm or 72mm x 52mm Load capacity 90kg. REACH compliant also PAH-Free rubber to confirm to EU-directive 2005/69/EC



Diameter (mm)	80
Castor Type	Swivel
Fixing Option	Plate
Height (mm)	100
Wheel Material	Rubber on Polypropylene
Colour / Shore Hardness	Grey Elastic Rubber on Polypropylene Rim / 65 Shore A
Temperature Resistance	-20 °C TO +60 °C
Bearing Type	Ball
Load Capacity (kg)	90
Tread (mm)	32
Swivel Radius (mm)	74
Plate Size (mm)	105 X 85
Hole Centres (mm)	80/72 x 60/52
Top Plate Thickness (mm)	2.5
Fork Thickness (mm)	2
To Suit Fixing Bolt (mm)	8

## BIL GROUP LTD

Porte Marsh Road, Calne, Wiltshire, SN11 9BW

Registered in England No: 2603821

VAT Reg: GB572705729

