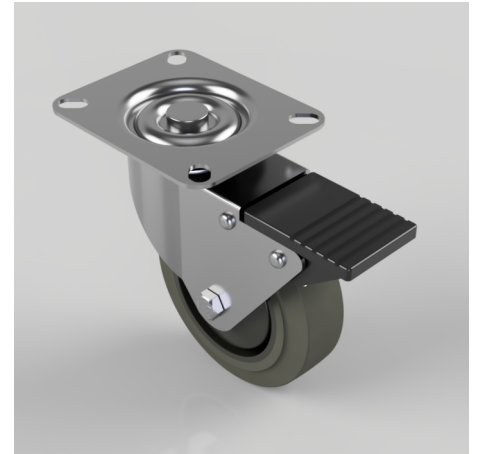


## Soft Grey Rubber Plate Swivel Castor Brake 100mm 100kg Load

**Product code: BZBC100STPRBJSWB**

Pressed steel swivel castor with top plate fixing fitted with a grey thermoplastic rubber tyre on black polypropylene centred wheel with a ball bearing, and a total lock brake. Wheel diameter 100mm, tread width 32mm, overall height 126mm, plate size 102mm x 84mm, hole centres 80mm x 60mm. Load capacity 100kg. REACH compliant also PAH-Free rubber to confirm to EU-directive 2005/69/EC



Diameter (mm)	100
Fixing Option	Plate
Castor Type	Swivel with Total Lock Brake
Plate Size (mm)	102 x 84
Hole Centres (mm)	80 X 60
Height (mm)	126
Bearing Type	Ball
Swivel Radius (mm)	115
Wheel Material	Rubber on Polypropylene
Colour / Shore Hardness	Grey Elastic Rubber on Polypropylene Rim / 65 Shore A
Top Plate Thickness (mm)	2
Fork Thickness (mm)	2
Temperature Resistance	-20 °C TO +60 °C
To Suit Fixing Bolt (mm)	8
Tread (mm)	32
Load Capacity (kg)	100