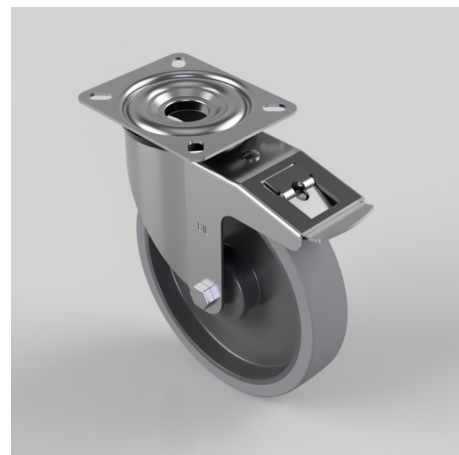


Soft Grey Rubber Plate Swivel Castor Brake 200mm 220kg Load

Product code: BZMM200STPRBJSWB

Pressed steel fixed castor with top plate fixing fitted with a 65 shore A grey thermoplastic rubber tyre on grey polypropylene centre wheel with single ball bearing with retaining caps. Wheel diameter 200mm, tread width 40mm, overall height 235mm, top plate 135mm x 110mm, hole centres 105mm x 80mm. Load capacity 220kg. REACH compliant also PAH-Free rubber to confirm to EU-directive 2005/69/EC



| | |
|--------------------------|---|
| Diameter (mm) | 200 |
| Castor Type | Swivel with Total Lock Brake |
| Fixing Option | Plate |
| Height (mm) | 235 |
| Wheel Material | Rubber on Polypropylene |
| Colour / Shore Hardness | Grey Elastic Rubber on Polypropylene Rim / 65 Shore A |
| Temperature Resistance | -20 °C TO +60 °C |
| Bearing Type | Ball |
| Load Capacity (kg) | 220 |
| Tread (mm) | 40 |
| Swivel Radius (mm) | 167 |
| Plate Size (mm) | 135 x 110 |
| Hole Centres (mm) | 105 x 80 |
| Top Plate Thickness (mm) | 2.5 |
| Fork Thickness (mm) | 2.5 |
| To Suit Fixing Bolt (mm) | 10 |

BIL GROUP LTD

Porte Marsh Road, Calne, Wiltshire, SN11 9BW

Registered in England No: 2603821

VAT Reg: GB572705729

