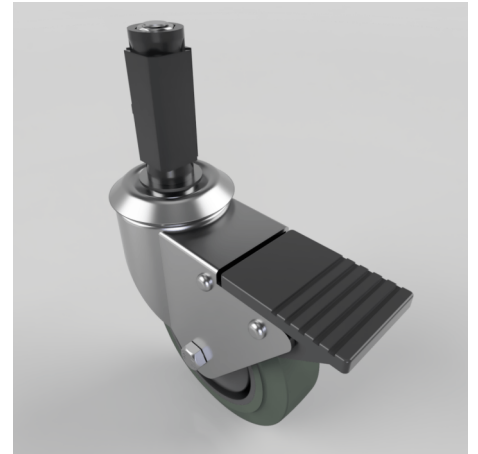


## Soft Grey Rubber Swivel Braked Expander 100mm 100kg

**Product code: BZBC100STPRBJSWBEXS21**

Pressed steel swivel castor fitted with a 21.5mm to 24mm square expander and a grey thermoplastic rubber on polypropylene wheel with a ball bearing bearing and total lock brake. Wheel diameter 100mm, tread width 32mm, overall height 126mm, Load capacity 100kg.



Height (mm)	128
Tread (mm)	32
Bearing Type	Ball
Diameter (mm)	100
Wheel Material	Rubber on Polypropylene
Fixing Option	Bolt Hole, Expander
Castor Type	Swivel with Total Lock Brake
Load Capacity (kg)	100
Swivel Radius (mm)	115
Expander Type (mm)	Square Expander to Suit 21.5 - 24
Fork Thickness (mm)	2
Head Dia (mm)	60
Colour / Shore Hardness	Grey Rubber on Polypropylene Rim / 65 Shore A
Temperature Resistance	-20 °C TO +60 °C

### BIL GROUP LTD

Porte Marsh Road, Calne, Wiltshire, SN11 9BW

Registered in England No: 2603821

VAT Reg: GB572705729

