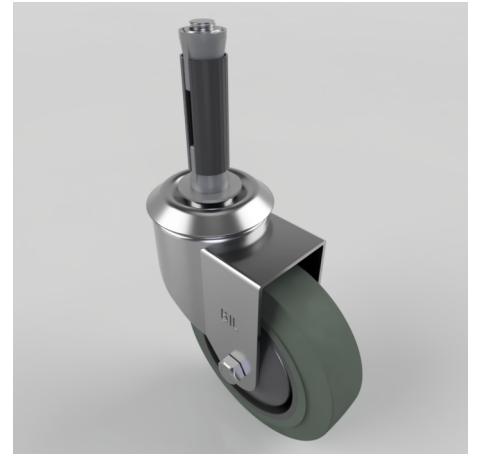


Soft Grey Rubber Swivel Expander 100mm 100kg

Product code: BZBC100STPRBJEXR18

Pressed steel swivel castor fitted with a 18.5mm to 21mm round expander and a grey thermoplastic rubber on polypropylene wheel with a ball bearing bearing. Wheel diameter 100mm, tread width 32mm, overall height 126mm, Load capacity 100kg.



Height (mm)	128
Tread (mm)	32
Bearing Type	Ball
Diameter (mm)	100
Wheel Material	Rubber on Polypropylene
Fixing Option	Bolt Hole, Expander
Castor Type	Swivel
Load Capacity (kg)	100
Swivel Radius (mm)	88
Expander Type (mm)	Round Expander to Suit 18.5 - 21
Fork Thickness (mm)	2
Head Dia (mm)	60
Colour / Shore Hardness	Grey Rubber on Polypropylene Rim / 65 Shore A
Temperature Resistance	-20 °C TO +60 °C