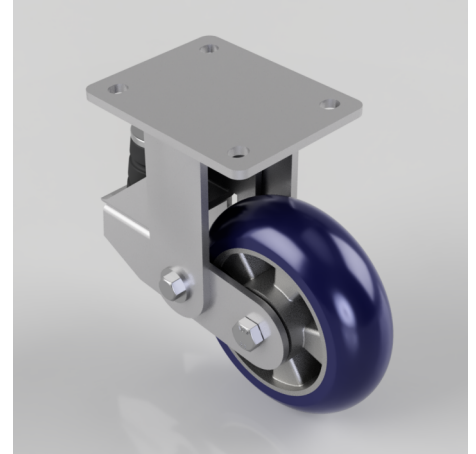


## Soft Speed Ergonomic Polyurethane Plate Fixed Castor 150mm 200kg

**Product code: BZKFL150RSPABJSPR200**

Fabricated fixed castor with top plate fixing fitted with a 150mm x 50mm blue speed polyurethane on an aluminium centred wheel with ball bearings overall height 203mm/183mm, plate size 138mm x 110mm, hole centres 105mm x 80mm. Load capacity 200kg black rubber spring. max speed 4kph (if you need higher speed ask for speed rubber/Polyurethane wheels up to 16kph)



Diameter (mm)	150
Fixing Option	Plate
Castor Type	Fixed
Bearing Type	Ball
Plate Size (mm)	138 x 110
Hole Centres (mm)	105 x 80/75
To Suit Fixing Bolt (mm)	10
Wheel Material	Polyurethane on Aluminium
Colour / Shore Hardness	Blue Ergonomic Polyurethane on Aluminium Rim / 75 Shore A
Temperature Resistance	-20 °C TO +70 °C
Top Plate Thickness (mm)	6
Fork Thickness (mm)	6
Load Capacity (kg)	200
Height Un-Laden (mm)	203
Height Fully Laden (mm)	183

### BIL GROUP LTD

Porte Marsh Road, Calne, Wiltshire, SN11 9BW

Registered in England No: 2603821

VAT Reg: GB572705729

