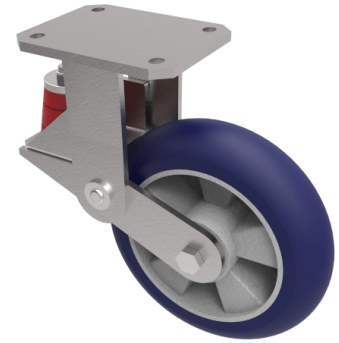


Soft Speed Ergonomic Polyurethane Plate Fixed Castor 200mm 600kg

Product code: BZKFL200RSPABJSPR



Fabricated fixed castor with top plate fixing fitted with a 200mm x 50mm 75 shore A ergonomic blue polyurethane tyred aluminium centred wheel with ball bearings overall height 237mm/257mm, plate size 138mm x 110mm, hole centres 105mm x 80mm. fitted with a 600kg at 4kph and 280kg at 16kph red polyurethane spring.

Diameter (mm)	200
Fixing Option	Plate
Castor Type	Fixed
Bearing Type	Ball
Plate Size (mm)	138 x 110
Hole Centres (mm)	105 x 80/75
To Suit Fixing Bolt (mm)	10
Wheel Material	Polyurethane on Aluminium
Colour / Shore Hardness	Blue Ergonomic Polyurethane on Aluminium Rim / 75 Shore A
Temperature Resistance	-20 °C TO +70 °C
Top Plate Thickness (mm)	7.5
Fork Thickness (mm)	6
Load Capacity (kg)	600
Height Un-Laden (mm)	257
Height Fully Laden (mm)	237

BIL GROUP LTD

Porte Marsh Road, Calne, Wiltshire, SN11 9BW

Registered in England No: 2603821

VAT Reg: GB572705729

