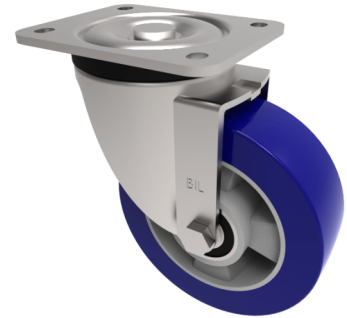


## Soft Speed Polyurethane Plate Swivel Castor 150mm 500kg Load

**Product code: BZXP150SPABJ**



Pressed steel swivel castor with a top plate fixing fitted with a blue 75 shore A polyurethane tyre on aluminium centred wheel with ball bearings. Wheel diameter 150mm, tread width 50mm, overall height 200mm, top plate 135mm x 110mm, hole centres 105mm x 80mm/75mm. Load capacity 500kg at 4kph and 190kg at 16kph **\*\*FOR INTERNAL TOWING ONLY\*\***

Diameter (mm)	150
Load Capacity (kg)	500
Bearing Type	Ball
Fixing Option	Plate
Castor Type	Swivel
To Suit Fixing Bolt (mm)	10
Swivel Radius (mm)	140
Height (mm)	200
Plate Size (mm)	135 x 110
Hole Centres (mm)	105 x 75/80
Wheel Material	Polyurethane on Aluminium
Colour / Shore Hardness	Blue Polyurethane on Aluminium Rim / 75 Shore A
Tread (mm)	50
Top Plate Thickness (mm)	6
Temperature Resistance	-20 °C TO +70 °C
Fork Thickness (mm)	5

### BIL GROUP LTD

Porte Marsh Road, Calne, Wiltshire, SN11 9BW

Registered in England No: 2603821

VAT Reg: GB572705729

