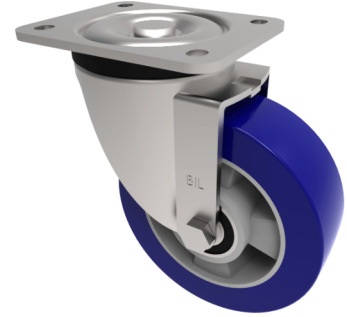


Soft Speed Polyurethane Plate Swivel Castor 160mm 550kg Load

Product code: BZSPH160SPABJ

Pressed steel swivel castor with a top plate fixing fitted with a blue 75 shore A polyurethane tyre on aluminium centred wheel with ball bearings. Wheel diameter 160mm, tread width 50mm, overall height 195mm, top plate 135mm x 110mm, hole centres 105mm x 80mm/75mm. Load capacity 550kg at 4kph and 190kg at 16kph ****FOR INTERNAL TOWING ONLY****



Diameter (mm)	160
Castor Type	Swivel
Fixing Option	Plate
Height (mm)	195
Wheel Material	Polyurethane on Aluminium
Colour / Shore Hardness	Blue Polyurethane on Aluminium Rim / 75 Shore A
Temperature Resistance	-20 °C TO +70 °C
Bearing Type	Ball
Load Capacity (kg)	550
Tread (mm)	50
Swivel Radius (mm)	133
Plate Size (mm)	135 x 110
Hole Centres (mm)	105 x 80/75
Top Plate Thickness (mm)	5
Fork Thickness (mm)	5
To Suit Fixing Bolt (mm)	10

BIL GROUP LTD

Porte Marsh Road, Calne, Wiltshire, SN11 9BW

Registered in England No: 2603821

VAT Reg: GB572705729

