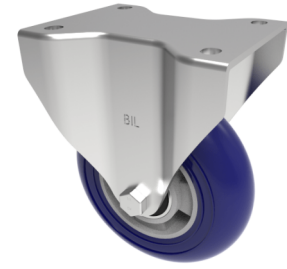


Softer Ergonomic Polyurethane Plate Fixed Castor 100mm 300kg Load

Product code: BZXPF100RSPABJ



Pressed steel fixed castor with a top plate fixing fitted with a blue 75 shore A ergonomic polyurethane round profile wheel with aluminium centre with ball bearings. Wheel diameter 100mm, tread width 40mm, overall height 140mm, plate size 105 mm x 86mm, hole centres 80/77mm x 60mm Load capacity 300kg.

| | |
|--------------------------|---|
| Diameter (mm) | 100 |
| Castor Type | Fixed |
| Fixing Option | Plate |
| Height (mm) | 140 |
| Wheel Material | Polyurethane on Aluminium |
| Colour / Shore Hardness | Blue Ergonomic Polyurethane on Aluminium Rim / 75 Shore A |
| Temperature Resistance | -20 °C TO +70 °C |
| Bearing Type | Ball |
| Load Capacity (kg) | 300 |
| Tread (mm) | 40 |
| Plate Size (mm) | 105 x 86 |
| Hole Centres (mm) | 105 x 75/80 |
| Top Plate Thickness (mm) | 6 |
| Fork Thickness (mm) | 5 |
| To Suit Fixing Bolt (mm) | 10 |

BIL GROUP LTD

Porte Marsh Road, Calne, Wiltshire, SN11 9BW

Registered in England No: 2603821

VAT Reg: GB572705729

