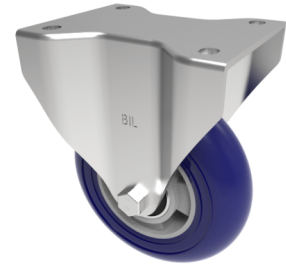


## softer Ergonomic Polyurethane Plate Fixed Castor 125mm 350kg Load

**Product code: BZXPF125RSPABJ**



Pressed steel fixed castor with a top plate fixing fitted with a ergonomic blue polyurethane 75 shore A tyre on aluminium centre wheel with ball bearings. Wheel diameter 125mm, tread width 41mm, overall height 165mm, top plate 105mm x 86mm, hole centres 80mm x 60mm. Load capacity 350kg at 4kph.

|                          |   |
|--------------------------|---|
| Diameter (mm)            | 125   |
| Castor Type              | Fixed   |
| Fixing Option            | Plate   |
| Height (mm)              | 165   |
| Wheel Material           | Polyurethane on Aluminium                                 |
| Colour / Shore Hardness  | Blue Ergonomic Polyurethane on Aluminium Rim / 75 Shore A |
| Temperature Resistance   | -20 °C TO +70 °C  |
| Bearing Type             | Ball  |
| Load Capacity (kg)       | 350   |
| Tread (mm)               | 41  |
| Plate Size (mm)          | 105 x 86  |
| Hole Centres (mm)        | 105 x 75/80   |
| Top Plate Thickness (mm) | 6   |
| Fork Thickness (mm)      | 5   |
| To Suit Fixing Bolt (mm) | 10  |

### BIL GROUP LTD

Porte Marsh Road, Calne, Wiltshire, SN11 9BW

Registered in England No: 2603821

VAT Reg: GB572705729

