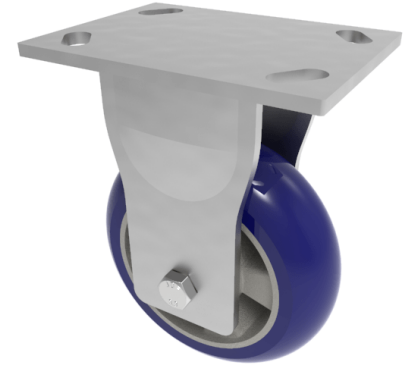


Softer Ergonomic Polyurethane Plate Fixed Castor 150mm 500kg Load

Product code: BZKF150RSPABJ



Fabricated fixed castor with top plate fixing fitted with a Blue 75 Shore A blue ergonomic polyurethane tyre on an aluminium centred wheel with ball bearings. Wheel diameter 150mm, tread width 50mm, overall height 200mm, top plate 150mm x 110mm, hole centres 105mm x 80mm or 121mm x 59mm. Load capacity 500kg at 4kph load capacity 200 at 16kph
 ** FOR INTERNAL AND EXTERNAL TOWING USE **

Diameter (mm)	150
Fixing Option	Plate
Castor Type	Fixed
Bearing Type	Ball
Height (mm)	200
Plate Size (mm)	150 x 110
Hole Centres (mm)	105/121 x 80/59
To Suit Fixing Bolt (mm)	12
Wheel Material	Polyurethane on Aluminium
Colour / Shore Hardness	Blue Ergonomic Polyurethane on Aluminium Rim / 75 Shore A
Temperature Resistance	-20 °C TO +70 °C
Top Plate Thickness (mm)	7.5
Fork Thickness (mm)	6
Load Capacity (kg)	500
Tread (mm)	50