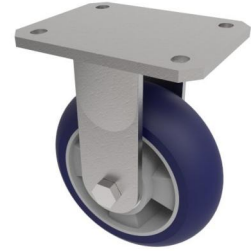


## Softer Ergonomic Polyurethane Plate Fixed Castor 160mm 550kg Load

**Product code: BZSABF160RSPABJ**



Fabricated zinc plated fixed castor with plate fixing fitted with a blue 75 shore A polyurethane tyre aluminium centred wheel centred wheel with ball bearings. Wheel diameter 160mm, tread width 50mm, overall height 250mm, plate size 138mm x 110mm, hole centres 105mm x 80mm/75mm. Load capacity 550kg at 4kph & 220kg at 16kph \*\* FOR INTERNAL AND EXTERNAL TOWING USE\*\*

|                          |   |
|--------------------------|---|
| Diameter (mm)            | 160   |
| Fixing Option            | Plate   |
| Castor Type              | Fixed   |
| Bearing Type             | Ball  |
| Height (mm)              | 205   |
| Plate Size (mm)          | 138 x 110   |
| Hole Centres (mm)        | 105 x 80  |
| To Suit Fixing Bolt (mm) | 10  |
| Wheel Material           | Polyurethane on Aluminium                                 |
| Colour / Shore Hardness  | Blue Ergonomic Polyurethane on Aluminium Rim / 75 Shore A |
| Temperature Resistance   | -20 °C TO +70 °C  |
| Top Plate Thickness (mm) | 8   |
| Fork Thickness (mm)      | 6   |
| Load Capacity (kg)       | 550   |
| Tread (mm)               | 50  |

### BIL GROUP LTD

Porte Marsh Road, Calne, Wiltshire, SN11 9BW

Registered in England No: 2603821

VAT Reg: GB572705729

