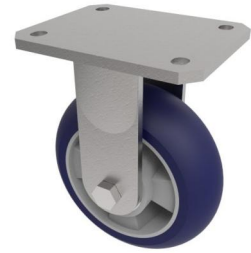


## Softer Ergonomic Polyurethane Plate Fixed Castor 160mm 550kg Load



**Product code: BZSAB1F60RSPABJ**

Fabricated zinc plated fixed castor with plate fixing fitted with a blue 75 shore A polyurethane tyre aluminium centred wheel centred wheel with ball bearings. Wheel diameter 160mm, tread width 50mm, overall height 250mm, plate size 138mm x 110mm, hole centres 105mm x 80mm/75mm. Load capacity 550kg at 4kph & 220kg at 16kph \*\* FOR INTERNAL AND EXTERNAL TOWING USE\*\*

Diameter (mm)	160
Fixing Option	Plate
Castor Type	Fixed
Bearing Type	Ball
Height (mm)	205
Plate Size (mm)	138 x 110
Hole Centres (mm)	105 x 80
To Suit Fixing Bolt (mm)	10
Wheel Material	Polyurethane on Aluminium
Colour / Shore Hardness	Blue Ergonomic Polyurethane on Aluminium Rim / 75 Shore A
Temperature Resistance	-20 °C TO +70 °C
Top Plate Thickness (mm)	8
Fork Thickness (mm)	6
Load Capacity (kg)	550
Tread (mm)	50

### BIL GROUP LTD

Porte Marsh Road, Calne, Wiltshire, SN11 9BW

Registered in England No: 2603821

VAT Reg: GB572705729

