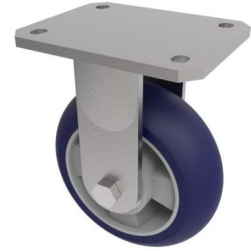


## Softer Ergonomic Polyurethane Plate Fixed Castor 200mm 700kg Load

**Product code: BZSABF200RSPABJ**



Fabricated zinc plated fixed castor with plate fixing fitted with a green 85 shore A polyurethane tyre aluminium centred wheel centred wheel with ball bearings. Wheel diameter 200mm, tread width 50mm, overall height 250mm, plate size 138mm x 110mm, hole centres 105mm x 80mm/75mm. Load capacity 700kg at 4kph and 280kg at 16kph \*\* FOR INTERNAL AND EXTERNAL TOWING USE\*\*

Diameter (mm)	200
Fixing Option	Plate
Castor Type	Fixed
Bearing Type	Ball
Height (mm)	250
Plate Size (mm)	138 x 110
Hole Centres (mm)	105 x 80
To Suit Fixing Bolt (mm)	10
Wheel Material	Polyurethane on Aluminium
Colour / Shore Hardness	Blue Ergonomic Polyurethane on Aluminium Rim / 75 Shore A
Temperature Resistance	-20 °C TO +70 °C
Top Plate Thickness (mm)	8
Fork Thickness (mm)	6
Load Capacity (kg)	700
Tread (mm)	50