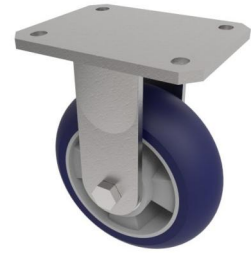


Softer Ergonomic Polyurethane Plate Fixed Castor 250mm 800kg Load



Product code: BZSABF250RSPABJ

Fabricated zinc plated fixed castor with plate fixing fitted with a blue 75shore A polyurethane tyre aluminium centred wheel centred wheel with ball bearings. Wheel diameter 250mm, tread width 50mm, overall height 300mm, plate size 138mm x 110mm, hole centres 105mm x 80mm/75mm. Load capacity 800kg at 4kph and 320kg at 16kph ** FOR INTERNAL AND EXTERNAL TOWING USE**

Diameter (mm)	250
Fixing Option	Plate
Castor Type	Fixed
Bearing Type	Ball
Height (mm)	300
Plate Size (mm)	138 x 110
Hole Centres (mm)	105 x 80
To Suit Fixing Bolt (mm)	10
Wheel Material	Polyurethane on Aluminium
Colour / Shore Hardness	Blue Ergonomic Polyurethane on Aluminium Rim / 75 Shore A
Temperature Resistance	-20 °C TO +70 °C
Top Plate Thickness (mm)	8
Fork Thickness (mm)	6
Load Capacity (kg)	800
Tread (mm)	50

BIL GROUP LTD

Porte Marsh Road, Calne, Wiltshire, SN11 9BW

Registered in England No: 2603821

VAT Reg: GB572705729

