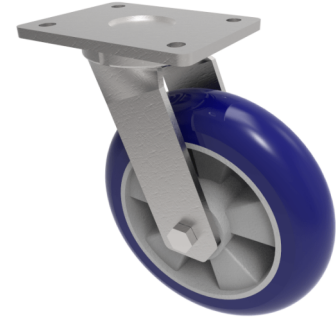


Softer Ergonomic Polyurethane Plate Swivel Castor 100mm 300kg Load

Product code: BZMJ100RSPABJ



Fabricated zinc plated swivel castor with a top plate fixing fitted with a ergonomic blue 75 shore A polyurethane tyred on aluminium centred wheel with ball bearings. Wheel diameter 100mm, tread width 40mm, overall height 143mm, top plate 138mm x 110mm, Hole centres 105mm x 80mm/75mm. Load capacity 300kg.

Diameter (mm)	100
Fixing Option	Plate
Castor Type	Swivel
Bearing Type	Ball
Height (mm)	143
Plate Size (mm)	138 x 110
Hole Centres (mm)	105 x 80/75
To Suit Fixing Bolt (mm)	10
Wheel Material	Polyurethane on Aluminium
Colour / Shore Hardness	Blue Ergonomic Polyurethane on Aluminium Rim / 75 Shore A
Temperature Resistance	-20 °C TO +70 °C
Top Plate Thickness (mm)	7
Fork Thickness (mm)	6
Swivel Radius (mm)	85
Load Capacity (kg)	300
Tread (mm)	40

BIL GROUP LTD

Porte Marsh Road, Calne, Wiltshire, SN11 9BW

Registered in England No: 2603821

VAT Reg: GB572705729

