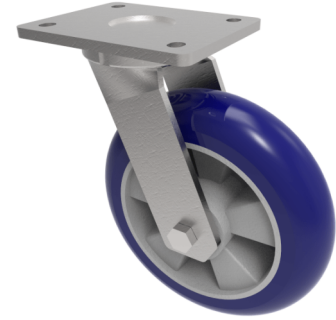


Softer Ergonomic Polyurethane Plate Swivel Castor 160mm 550kg Load

Product code: BZSAB160RSPABJ



Fabricated zinc plated swivel castor with plate fixing fitted with a blue 75 shore A polyurethane tyre aluminium centred wheel centred wheel with ball bearings. Wheel diameter 160mm, tread width 50mm, overall height 250mm, plate size 138mm x 110mm, hole centres 105mm x 80mm/75mm. Load capacity 550kg at 4kph & 220kg at 16kph ** FOR INTERNAL AND EXTERNAL TOWING USE**

| | |
|--------------------------|---|
| Diameter (mm) | 160 |
| Fixing Option | Plate |
| Castor Type | Swivel |
| Bearing Type | Ball |
| Height (mm) | 205 |
| Plate Size (mm) | 138 x 110 |
| Hole Centres (mm) | 105 x 80 |
| To Suit Fixing Bolt (mm) | 10 |
| Wheel Material | Polyurethane on Aluminium |
| Colour / Shore Hardness | Blue Ergonomic Polyurethane on Aluminium Rim / 75 Shore A |
| Temperature Resistance | -20 °C TO +70 °C |
| Top Plate Thickness (mm) | 8 |
| Fork Thickness (mm) | 6 |
| Swivel Radius (mm) | 135 |
| Load Capacity (kg) | 550 |
| Tread (mm) | 50 |