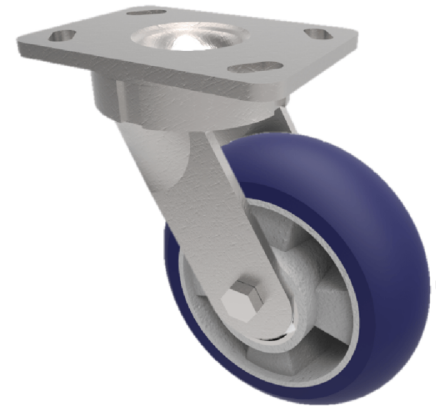


Softer Ergonomic Polyurethane Plate Swivel Castor 250mm 800kg Load

Product code: BZK250RSPABJ

Fabricated swivel castor with a top plate fixing fitted with a ergonomic blue 75 shore A polyurethane tyred aluminium centred ball bearing wheel, Wheel diameter 250mm, tread width 50mm, overall height 300mm, top plate 150mm x 110mm, hole centres 105mm x 80mm or 121mm x 59mm. Load capacity 800kg at 4KPH 320kg at 16KPH ** FOR INTERNAL AND EXTERNAL TOWING USE **



Diameter (mm)	250
Fixing Option	Plate
Castor Type	Swivel
Bearing Type	Ball
Height (mm)	300
Plate Size (mm)	150 x 110
Hole Centres (mm)	105/121 x 80/59
To Suit Fixing Bolt (mm)	12
Wheel Material	Polyurethane on Aluminium
Colour / Shore Hardness	Blue Ergonomic Polyurethane on Aluminium Rim / 75 Shore A
Temperature Resistance	-20 °C TO +70 °C
Top Plate Thickness (mm)	7.5
Fork Thickness (mm)	6
Swivel Radius (mm)	197
Load Capacity (kg)	800
Tread (mm)	50

BIL GROUP LTD

Porte Marsh Road, Calne, Wiltshire, SN11 9BW

Registered in England No: 2603821

VAT Reg: GB572705729

