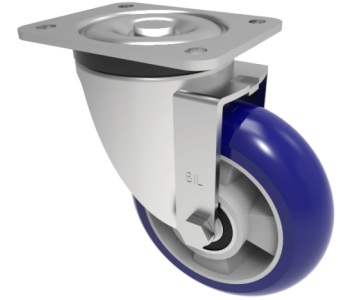


Softer Ergonomic Polyurethane Plate Swivel Castor Brake 100mm 300kg Load

Product code: BZXP100RSPABJ



Pressed steel swivel castor with a top plate fixing fitted with a blue 75 shore A ergonomic polyurethane round profile wheel with aluminium centre with ball bearings. Wheel diameter 100mm, tread width 40mm, overall height 140mm, plate size 105 mm x 86mm, hole centres 80/77mm x 60mm Load capacity 300kg.

Diameter (mm)	100
Castor Type	Swivel
Fixing Option	Plate
Height (mm)	140
Wheel Material	Polyurethane on Aluminium
Colour / Shore Hardness	Blue Ergonomic Polyurethane on Aluminium Rim / 75 Shore A
Temperature Resistance	-20 °C TO +70 °C
Bearing Type	Ball
Load Capacity (kg)	300
Tread (mm)	40
Swivel Radius (mm)	95
Plate Size (mm)	105 x 86
Hole Centres (mm)	80 / 77 X 60
Top Plate Thickness (mm)	6
Fork Thickness (mm)	5
To Suit Fixing Bolt (mm)	8

BIL GROUP LTD

Porte Marsh Road, Calne, Wiltshire, SN11 9BW

Registered in England No: 2603821

VAT Reg: GB572705729

