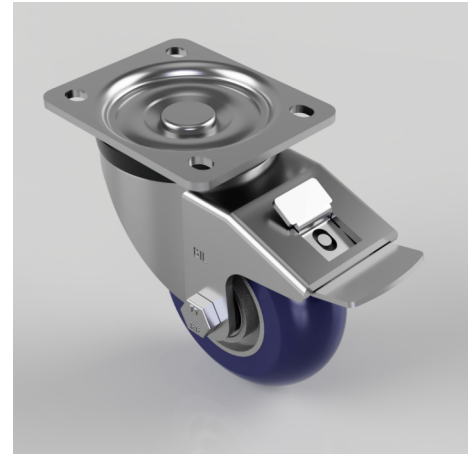


Softer Ergonomic Polyurethane Plate Swivel Castor Brake 100mm 300kg Load

Product code: BZH100RSPABJSWB

Pressed steel swivel castor with a top plate fixing fitted with an ergonomic blue 75 shore A polyurethane tyre on aluminium centred wheel with ball bearings and a total lock brake. Wheel diameter 100mm, tread width 40mm, overall height 128mm, top plate 105mm x 86mm, hole centres 80mm x 60mm. Load capacity 300kg at 4kph



Diameter (mm)	100
Castor Type	Swivel with Total Lock Brake
Fixing Option	Plate
Height (mm)	128
Wheel Material	Polyurethane on Aluminium
Colour / Shore Hardness	Blue Ergonomic Polyurethane on Aluminium Rim / 75 Shore A
Temperature Resistance	-20 °C TO +70 °C
Bearing Type	Ball
Load Capacity (kg)	300
Tread (mm)	40
Swivel Radius (mm)	120
Plate Size (mm)	105 x 86
Hole Centres (mm)	80 X 60
Top Plate Thickness (mm)	4
Fork Thickness (mm)	4
To Suit Fixing Bolt (mm)	8