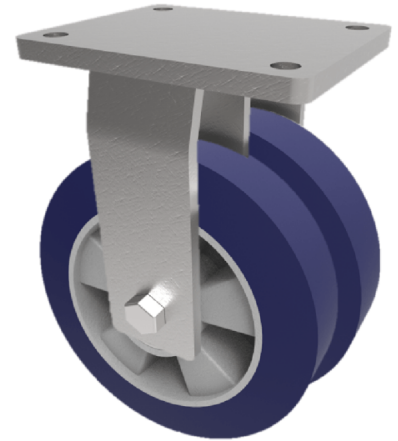


## Softer Polyurethane Plate Fixed Castor 150mm 1000kg Load

**Product code: 2BZQF150SPABJ**

Twin wheeled fixed castor with a top plate fixing fitted with 2 x blue elastic 75 shoreA polyurethane wheels on aluminium centres with ball journal bearings. Wheel diameter 2 x 150 mm, tread width 2 x 50mm, overall height 212mm, top plate 175mm x 140mm, hole centres 140mm x 105mm. Load capacity 1000kg at 4kph and 400kg at 16kph \*\* FOR INTERNAL AND EXTERNAL TOWING USE \*\*



Diameter (mm)	150
Fixing Option	Plate
Castor Type	Fixed
Bearing Type	Ball
Plate Size (mm)	175 X 140
Hole Centres (mm)	140 X 105
Height (mm)	212
To Suit Fixing Bolt (mm)	14
Wheel Material	Polyurethane on Aluminium
Colour / Shore Hardness	Blue Polyurethane on Aluminium Rim / 75 Shore A
Temperature Resistance	&quot;-20 °C TO +70 °C
Tread (mm)	2 x 50
Load Capacity (kg)	1000
Top Plate Thickness (mm)	12
Fork Thickness (mm)	8

### BIL GROUP LTD

Porte Marsh Road, Calne, Wiltshire, SN11 9BW

Registered in England No: 2603821

VAT Reg: GB572705729

