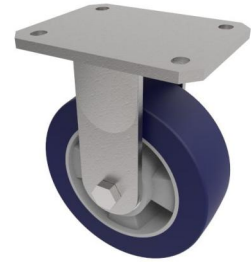


Softer Polyurethane Plate Fixed Castor 150mm 500kg Load

Product code: BZSABF150SPABJ



Fabricated zinc plated fixed castor with a top plate fixing fitted with a blue 75 shore A polyurethane tyred on aluminium centred wheel with a ball bearing. Wheel diameter 150mm, tread width 50mm, overall height 200mm, plate size 138mm x 110mm, hole centres 105mm x 75/80mm. Load capacity 500kg at 4kph, 200kg at 16kph. ** FOR INTERNAL AND EXTERNAL TOWING USE**

Diameter (mm)	150
Fixing Option	Plate
Castor Type	Fixed
Bearing Type	Ball
Height (mm)	200
Plate Size (mm)	138 x 110
Hole Centres (mm)	105 x 80
To Suit Fixing Bolt (mm)	10
Wheel Material	Polyurethane on Aluminium
Colour / Shore Hardness	Blue Polyurethane on Aluminium Rim / 75 Shore A
Temperature Resistance	-20 °C TO +70 °C
Top Plate Thickness (mm)	8
Fork Thickness (mm)	6
Load Capacity (kg)	500
Tread (mm)	50