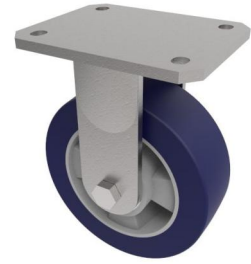


## Softer Polyurethane Plate Fixed Castor 200mm 600kg Load

**Product code: BZMJF200SPABJ**



Fabricated steel fixed castor with a top plate fixing fitted with a blue 75 shore A polyurethane tyred on aluminium centred wheel with a ball bearing. Wheel diameter 200mm, tread width 50mm, overall height 240mm, plate size 138mm x 110mm, hole centres 105mm x 75/80mm. Load capacity 600kg at 4kph, 280kg at 16kph. \*\* FOR INTERNAL TOWING USE ONLY \*\*

Diameter (mm)	200
Fixing Option	Plate
Castor Type	Fixed
Bearing Type	Ball
Height (mm)	241
Plate Size (mm)	138 x 110
Hole Centres (mm)	105 x 80/75
To Suit Fixing Bolt (mm)	10
Wheel Material	Polyurethane on Aluminium
Colour / Shore Hardness	Blue Polyurethane on Aluminium Rim / 75 Shore A
Temperature Resistance	-20 °C TO +70 °C
Top Plate Thickness (mm)	7
Fork Thickness (mm)	6
Load Capacity (kg)	700
Tread (mm)	50

### BIL GROUP LTD

Porte Marsh Road, Calne, Wiltshire, SN11 9BW

Registered in England No: 2603821

VAT Reg: GB572705729

